



TEST REPORT
ON
SINGLE POLE
FOUR THROW
ABSORPTIVE / NON-REFLECTIVE
SWITCH MODULE

AMC MODEL No:
SKL-103F-4DT-1-AA973

Serial Numbers: 4MS101023 and 4MS101024

DESIGNED
BY
A. K. Gorwara

TESTED
BY
R. Afable

REPORTED
BY
E. ELDER

March 11, 2004

AMERICAN MICROWAVE CORPORATION., 7311-G Grove Road, Frederick, MD 21704
Tel: 301-662-4700 • Fax: 301-662-4938 • Email: sales@americanmicrowavecorp.com
Website: <http://www.americanmicrowavecorp.com>

ISO9001 : 1994 CERTIFIED

Handwritten signatures and initials:
JST, LC, DRH, WBS, SKM, 14

TABLE OF CONTENTS

●	PRODUCT DESCRIPTION AND ELECTRICAL SPECIFICATIONS	PAGE 3
●	PRODUCT FEATURE FOR SKL-103F-4DT-1-AA973	PAGE 4
●	PRODUCT FEATURE FOR SKL-103F-4DT-1-AA973 OUTLINE DRAWING	PAGE 5
●	PRODUCT FEATURE FOR SKL-103F-4DT-1-AA973 ELECTRICAL SCHEMATIC	PAGE 6
●	TEST DATA ON SKL-103F-4DT-1-AA973, SERIAL NUMBERS 4MS101023 AND 4MS101024	PAGE 7
●	SERIAL NUMBER 4MS101023 FINAL TEST RESULTS	PAGE 8
●	SERIAL NUMBER 4MS101024 FINAL TEST RESULTS	PAGE 9

SINGLE POLE, FOUR THROW ABSORPTIVE / NON-REFLECTIVE SWITCH MODULE AMC MODEL No: SKL-103F-4DT-1-AA973

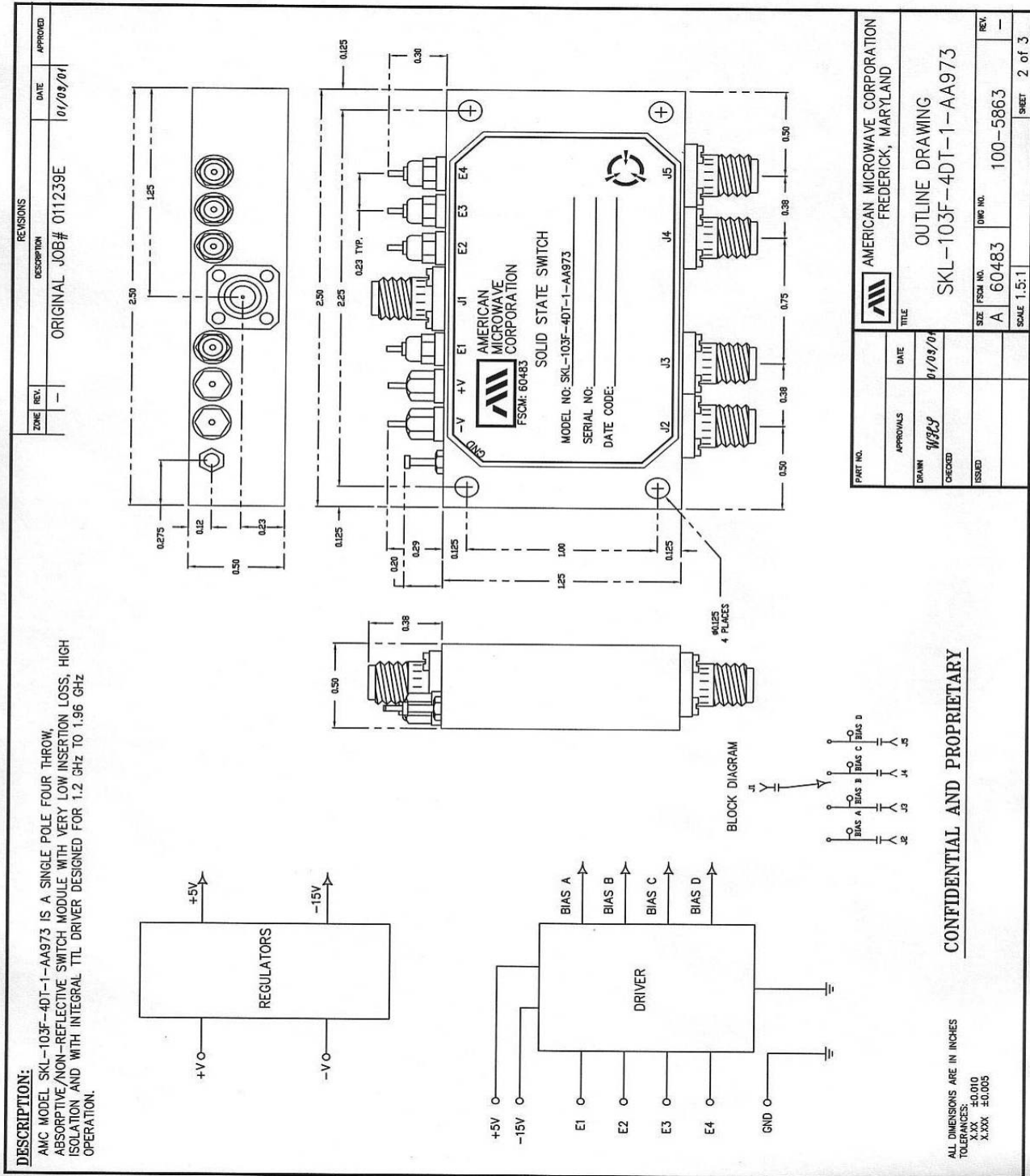
FEATURES:

- **INTEGRAL TTL DRIVER**
- **1.2 TO 1.96 GHz FREQUENCY RANGE**
- **VERY LOW INSERTION LOSS**
- **HIGH ISOLATION**

SPECIFICATIONS:

- **FREQUENCY** : 1.2 TO 1.96 GHz
- **INSERTION LOSS** : 1.5 dB MAXIMUM
- **ISOLATION** : 90 dB MINIMUM
- **VSWR** : 1.3:1
- **SPEED** : DELAY ON/OFF: 100 nS MAXIMUM
- **POWER INPUT** : (CW) +20 dBm
- **SURVIVAL POWER** : 1 WATT CW, 10 WATTS PEAK I uSEC
- **IN BAND FLATNESS** : 1.2 TO 1.4 GHz: 0.2 dB PEAK TO PEAK
: 1.75 TO 1.96 GHz: 0.4 dB PEAK TO PEAK
- **CONTROL** : "1" (HIGH) 2.4 TO 5 VDC PORT "ON"
: "0" (LOW) 0 TO 0.8 VDC PORT "OFF"
- **POWER SUPPLY** : +5 V @ 250 mA MAXIMUM
: -15 V @ 150 mA MAXIMUM
- **CONNECTORS** : RF: SMA FEMALE
: CONTROL: SOLDER PIN
- **SIZE** : 2.5" (L) X 1.25" (W) X 0.50" (H)
- **WEIGHT** : 5.5 OUNCE TYPICAL

OUTLINE DRAWING

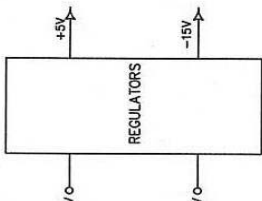


ELECTRICAL SCHEMATIC

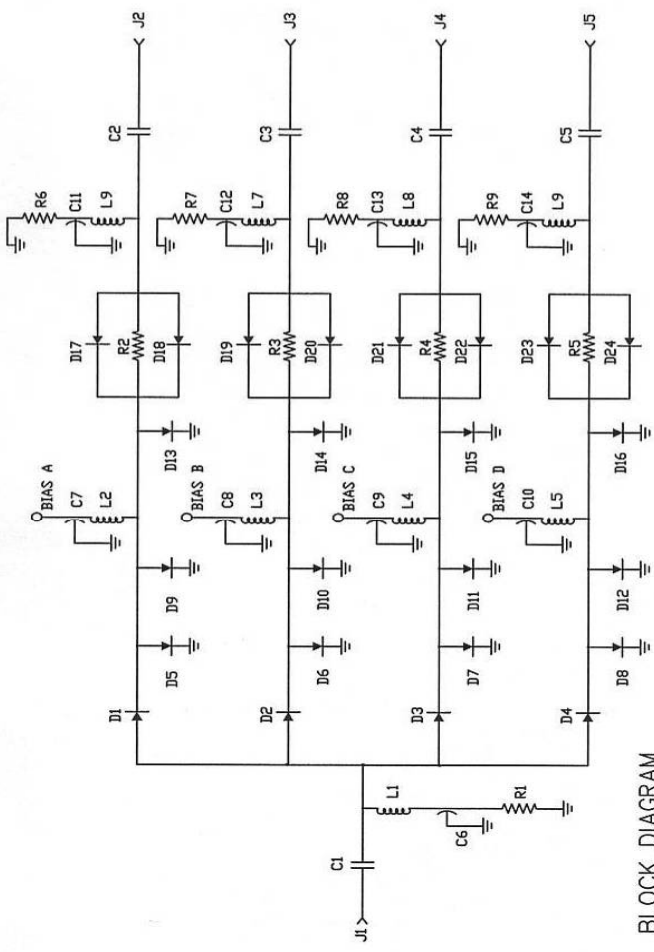
REVISIONS	DESCRIPTION	DATE	APPROVED
ZONE REV: -	ORIGINAL JOB# 011239E	01/08/04	

DESCRIPTION:
 AMC MODEL SKL-103F-4DT-1-AA973 IS A SINGLE POLE FOUR THROW, ABSORPTIVE/NON-REFLECTIVE SWITCH MODULE WITH VERY LOW INSERTION LOSS, HIGH ISOLATION AND WITH INTEGRAL TTL DRIVER DESIGNED FOR 1.2 GHz TO 1.96 GHz OPERATION.

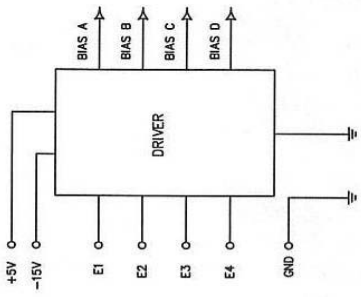
REGULATORS



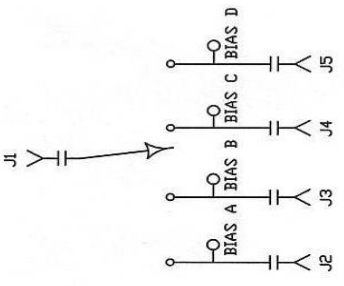
ELECTRICAL SCHEMATIC



DRIVER



BLOCK DIAGRAM



CONFIDENTIAL AND PROPRIETARY

ALL DIMENSIONS ARE IN INCHES
 TOLERANCES:
 X.XX ±0.010
 X.XXX ±0.005

PART NO.	AMERICAN MICROWAVE CORPORATION FREDERICK, MARYLAND	DATE	REV.
APPROVALS	TITLE	01/08/04	-
DRAWN <i>WBL</i>	ELECTRICAL SCHEMATIC		
CHECKED	SKL-103F-4DT-1-AA973		
ISSUED	SIZE FSCH NO. A 60483	DWG NO. 100-5863	SHEET 3 of 3

FINAL TEST DATA

FINAL TEST DATA SHEETS

FOR

AMC MODEL NUMBER

SKL-103F-4DT-1-AA973

Serial Numbers:

4MS101023 THRU 4MS101024

